

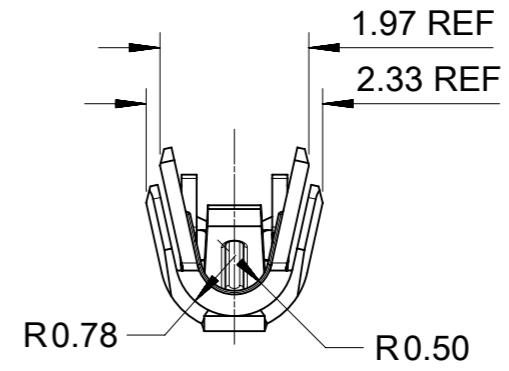
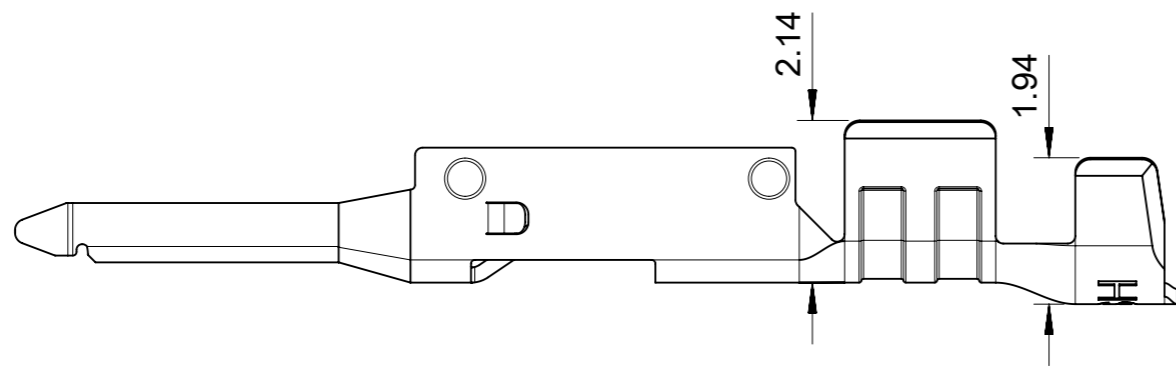
NOTES:

1. MATERIAL: HIGH CONDUCTIVITY COPPER ALLOY.
2. PLATING FINISH SEE CHART IN SHEET 3.
3. PRODUCT SPECIFICATION: 2014471000-PS.
4. PACKAGE SPECIFICATION: 2014471000-PK.
5. THE TERMINAL IS LUBRICATED.
6. THE COMPONENT COMPLIANT TO RoHS DIRECTIVE 2011/65/EU AND ELV DIRECTIVE 2000/53/EC.
7. PRODUCT APPLY TO RECEPTACLE HOUSING OF 200277**** AND 201444****.
8. PARTS CONFORM TO CLASS 'B' REQUIREMENTS OF COSMETIC SPECIFICATION PS-45499-002.
9. APPLICATION SPECIFICATION: 2014471000-AS.
10. RECOMMENDED INSULATOR:
20AWG WIRE, OD 1.60MM MAX.
24AWG WIRE, OD 1.30MM MAX.

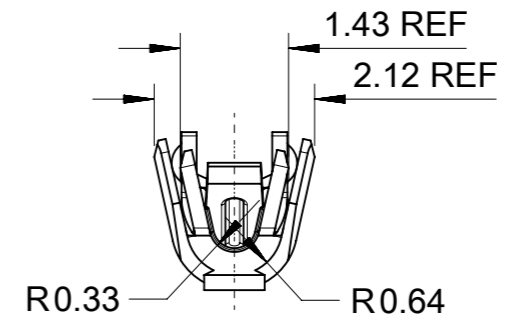
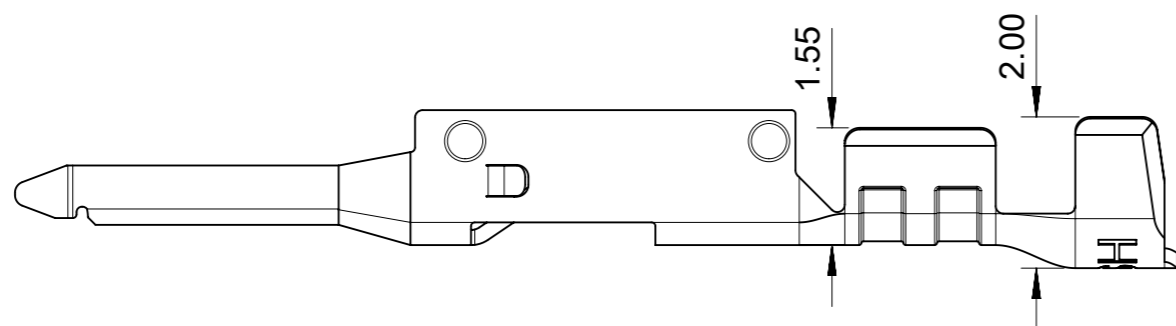
SYMBOLS		THIS DRAWING CONTAINS INFORMATION THAT IS PROPRIETARY TO MOLEX ELECTRONIC TECHNOLOGIES, LLC AND SHOULD NOT BE USED WITHOUT WRITTEN PERMISSION		CURRENT REV DESC:		molex	
▽ = 0	mm	SCALE	10:1	EC NO: 625285			
▽ = 0	GENERAL TOLERANCES (UNLESS SPECIFIED)		DRWN: GLLI		2019/11/13	PRODUCT CUSTOMER DRAWING	
▽ = 0	ANGULAR TOL ± °		CHK'D: YXZHENG		2019/11/15	DOCUMENT NUMBER	
▽ = 0	4 PLACES	±	APPR: YXZHENG		2019/11/15	2014471000-SD	DOC TYPE
▽ = 0	3 PLACES	± 0.1	INITIAL REVISION:		2018/07/20	PSD	DOC PART
▽ = 0	2 PLACES	± 0.2	DRWN: GLLI		2019/04/17	000	REVISION
▽ = 0	1 PLACE	± 0.3	APPR: AYIN			B	
▽ = 0	0 PLACES	±	DRAFT WHERE APPLICABLE MUST REMAIN WITHIN DIMENSIONS			SEE SHEET 3	CUSTOMER
□ = 0	THIRD ANGLE PROJECTION		DRAWING	SERIES	MATERIAL NUMBER	GENERAL MARKET	SHEET NUMBER
■ = 0	A3-SIZE		201447	201447	201447	1 OF 3	

9 8 7 6 5 4 3 2 1

E
D
C
B
A



ONLY FOR WIRE OF AWG 20/22



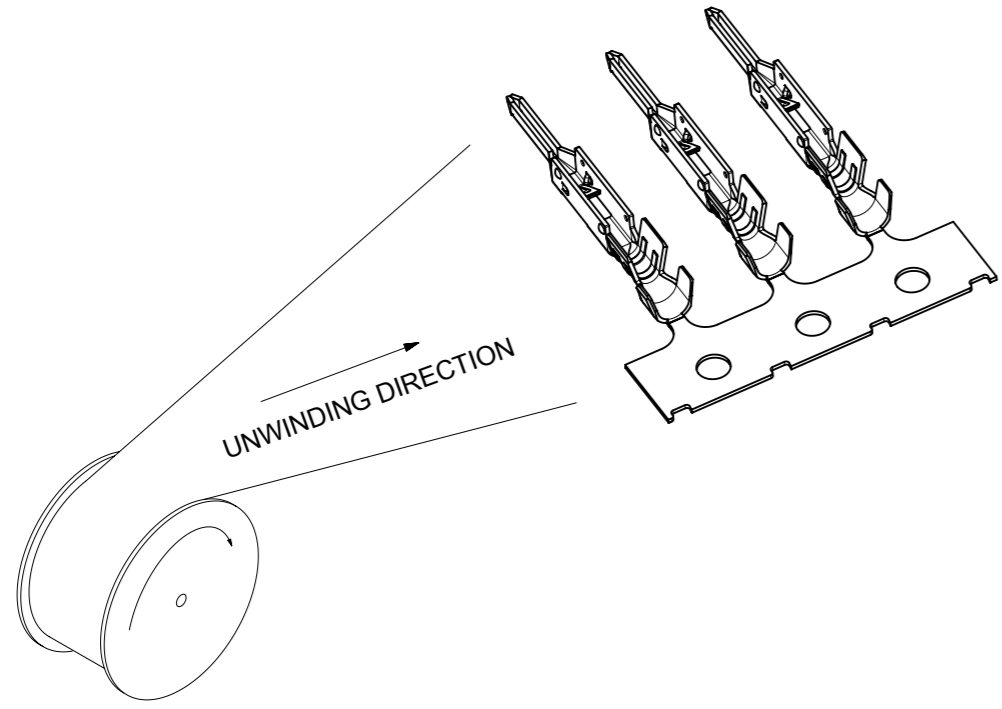
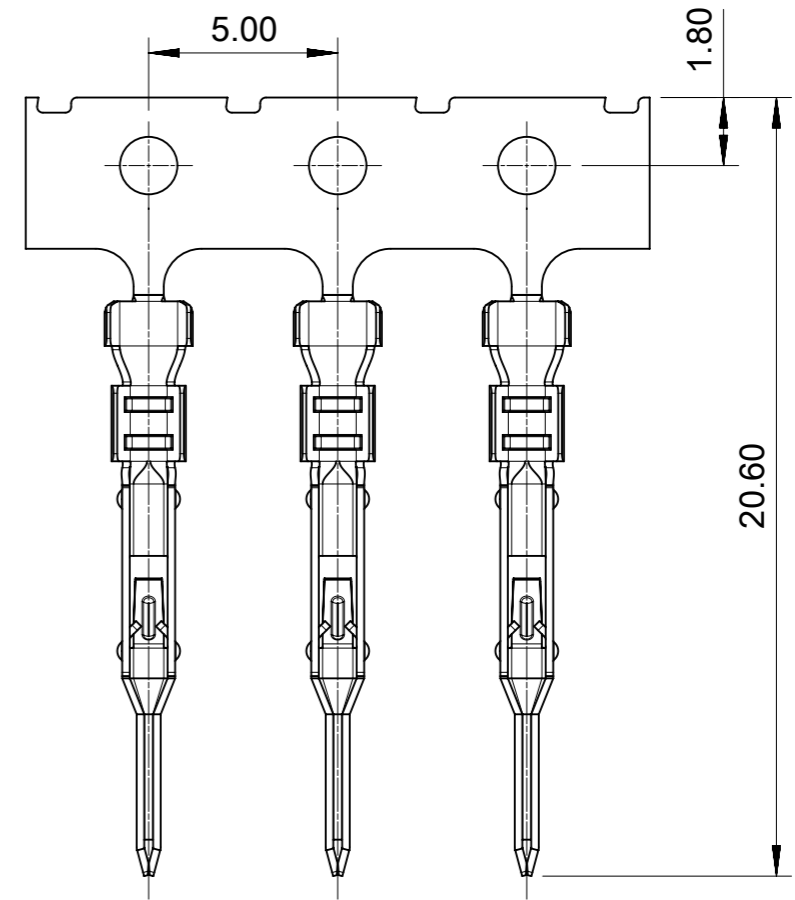
ONLY FOR WIRE OF AWG 24/26

SYMBOLS	THIS DRAWING CONTAINS INFORMATION THAT IS PROPRIETARY TO MOLEX ELECTRONIC TECHNOLOGIES, LLC AND SHOULD NOT BE USED WITHOUT WRITTEN PERMISSION		<p style="text-align: center;">molex</p> <p style="text-align: center;">SALES DRAWING OF PLUG TERMINAL</p> <p style="text-align: center;">PRODUCT CUSTOMER DRAWING</p>				
	DIMENSION UNITS	SCALE				DOCUMENT NUMBER	DOC TYPE
▽ = 0	mm	10:1	2014471000-SD	PSD	000	B	
▽ = 0	GENERAL TOLERANCES (UNLESS SPECIFIED)						
▽ = 0	ANGULAR TOL ± °		CURRENT REV DESC:				
▽ = 0	4 PLACES	±	EC NO: 625285	2019/11/13			
▽ = 0	3 PLACES	± 0.1	DRWN: GLLI	2019/11/15			
▽ = 0	2 PLACES	± 0.2	CHK'D: YXZHENG	2019/11/15			
▽ = 0	1 PLACE	± 0.3	APPR: YXZHENG	2019/11/15			
□ = 0	0 PLACES	±	INITIAL REVISION:				
■ = 0	DRAFT WHERE APPLICABLE MUST REMAIN WITHIN DIMENSIONS		DRWN: GLLI	2018/07/20			
▽ = 0	THIRD ANGLE PROJECTION		APPR: AYIN	2019/04/17			
		THIRD ANGLE PROJECTION	DRAWING	SERIES	MATERIAL NUMBER	CUSTOMER	SHEET NUMBER
			A3-SIZE	201447	SEE SHEET 3	GENERAL MARKET	2 OF 3

DOCUMENT STATUS	P1	RELEASE DATE	2019/11/15	01:48:23
-----------------	----	--------------	------------	----------

9 8 7 6 5 4 3 2 1

FORMAT: master-b-prod-A3
REVISION: 11
DATE: 2018/01/18



PART NUMBER (WITH LUBE)	PART NUMBER (WITHOUT LUBE)	PLATING TYPE	WIRE SIZE(AWG)
201447-1400	N/A	A	24/26
N/A	201447-1200	B	
201447-1600	201447-1300	C	
201447-2400	N/A	A	20/22
N/A	201447-2200	B	
201447-2600	201447-2300	C	

PLATING SPECIFICATION	
A	REFLOW MATTE TIN 2.5 MICRONS MINIMUM OVERALL, UNDER NICKEL PLATING 1.25 MICRONS MINIMUM OVERALL.
B	GOLD PLATING 0.38 MICRONS MINIMUM ON CONTACT AREA, MATTE TIN 2.5 MICRONS MINIMUM ON CRIMP AREA, UNDER NICKEL PLATING 1.25 MICRONS MINIMUM OVERALL.
C	GOLD PLATING 0.76 MICRONS MINIMUM ON CONTACT AREA, MATTE TIN 2.5 MICRONS MINIMUM ON CRIMP AREA, UNDER NICKEL PLATING 1.25 MICRONS MINIMUM OVERALL.

SYMBOLS ▽ = 0 ▽ = 0 ▽ = 0 ▽ = 0 ▽ = 0 ▽ = 0 ▽ = 0 ▽ = 0 ▽ = 0 ▽ = 0 ▽ = 0 ▽ = 0 ▽ = 0	THIS DRAWING CONTAINS INFORMATION THAT IS PROPRIETARY TO MOLEX ELECTRONIC TECHNOLOGIES, LLC AND SHOULD NOT BE USED WITHOUT WRITTEN PERMISSION DIMENSION UNITS: mm SCALE: 5:1	CURRENT REV DESC: EC NO: 625285 DRWN: GLLI 2019/11/13 CHK'D: YXZHENG 2019/11/15 APPR: YXZHENG 2019/11/15	molex		
	GENERAL TOLERANCES (UNLESS SPECIFIED) ANGULAR TOL ± °	INITIAL REVISION: DRWN: GLLI 2018/07/20 APPR: AYIN 2019/04/17	SALES DRAWING OF PLUG TERMINAL		
	4 PLACES ± 3 PLACES ± 0.1 2 PLACES ± 0.2 1 PLACE ± 0.3 0 PLACES ±	THIRD ANGLE PROJECTION 	PRODUCT CUSTOMER DRAWING		
	DRAFT WHERE APPLICABLE MUST REMAIN WITHIN DIMENSIONS	DRAWING: A3-SIZE SERIES: 201447	DOCUMENT NUMBER: 2014471000-SD DOC TYPE: PSD DOC PART: 000 REVISION: B	MATERIAL NUMBER: SEE CHART CUSTOMER: GENERAL MARKET	SHEET NUMBER: 3 OF 3