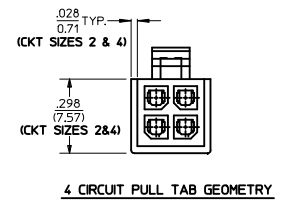
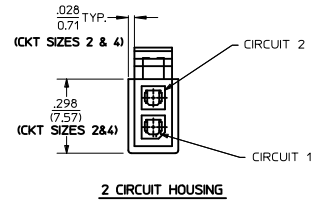
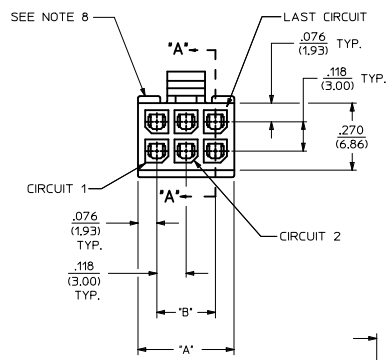
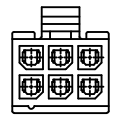
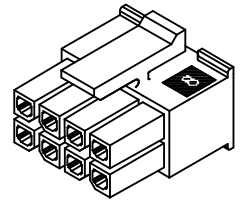
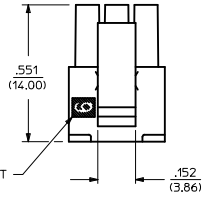
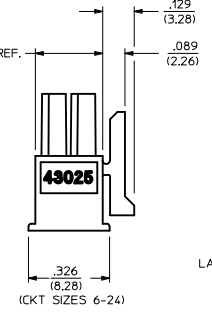
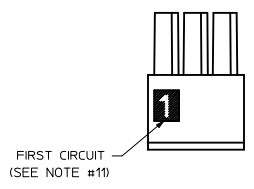


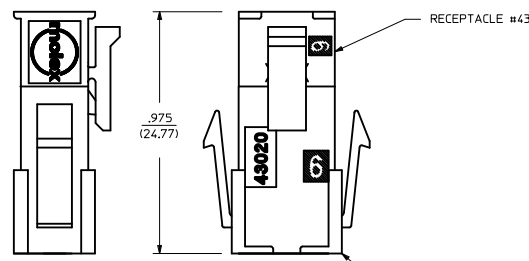
PART CHARACTERISTICS		CKT. NO.	DIM. 'A'	DIM. 'B'
NUMBER OF POSITION	ASSEMBLY ITEM NUMBER			
02	43025-0200	2	.152/(3.86)	N/A
04	43025-0400	4	.270/(6.85)	.118/(3.00)
06	43025-0600	6	.388/(9.85)	.236/(6.00)
08	43025-0800	8	.506/(12.85)	.354/(9.00)
10	43025-1000	10	.624/(15.85)	.472/(12.00)
12	43025-1200	12	.742/(18.85)	.591/(15.00)
14	43025-1400	14	.860/(21.85)	.709/(18.00)
16	43025-1600	16	.978/(24.85)	.827/(21.00)
18	43025-1800	18	1.096/(27.85)	.945/(24.00)
20	43025-2000	20	1.215/(30.85)	1.063/(27.00)
22	43025-2200	22	1.333/(33.85)	1.181/(30.00)
24	43025-2400	24	1.451/(36.85)	1.299/(33.00)



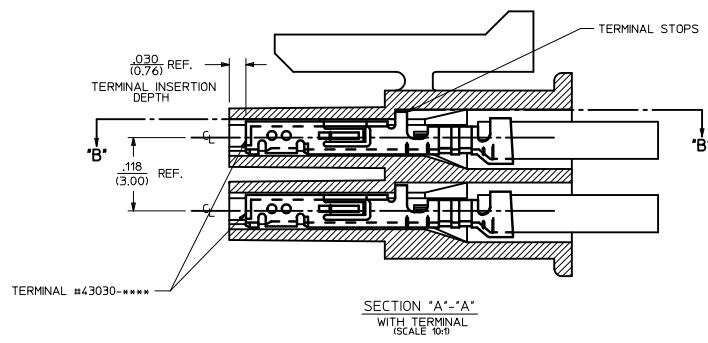
HOUSING SHOWN WITH OPTIONAL FIRST CIRCUIT IDENTIFIER RIB (SEE NOTE #11)



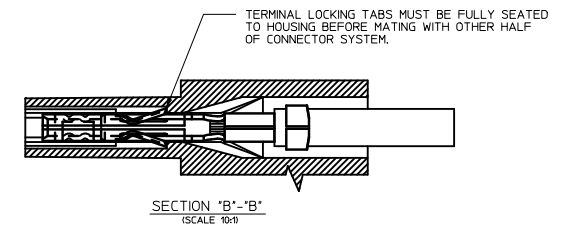
RECEPTACLE ISO VIEW (8 CIRCUIT SHOWN) (SEE NOTE 9 FOR TESTING)



MATED MICRO-FIT CONNECTOR



SECTION "A"-A' WITH TERMINAL (SCALE 10:1)



SECTION "B"-B' (SCALE 10:1)

NOTES:
 1) HOUSING MATERIAL: UNFILLED POLYESTER, RATED UL, 94V-0, COLOR IS BLACK.
 2) FINISH: N/A
 3) PRODUCT SPECIFICATION: PS-43045
 4) PACKAGING SPECIFICATION: PK-43025-001
 5) THIS RECEPTACLE MATES WITH 43020, 43045.
 6) THIS RECEPTACLE TO BE USED WITH MOLEX FEMALE TERMINAL #43030-****. SEE SECTION "A"-A' FOR TERMINAL ORIENTATION IN HOUSING.
 7) FOR OVERMOLDING PARAMETERS SEE ENGINEERING SPECIFICATION #SDS-43025-1000.
 8) TOP PULL TABS ARE NOT AVAILABLE ON 2 AND 4 CIRCUIT PARTS.
 9) MOLEX RECOMMENDS THE USE OF MICRO-FIT TEST PLUG, SERIES NO. 44242-**** WHENEVER TESTING IS PERFORMED. TEST PLUGS MUST NOT BE USED FOR MAKE OR BREAK UNDER LOAD. MOLEX DOES NOT RECOMMEND USING STANDARD MATING COMPONENTS FOR HARNESS TESTING PURPOSES.
 10) SOME HOUSINGS MAY HAVE A SMALL GATE BLEMISH NEAR THE GATE THAT DOES NOT AFFECT FUNCTIONALITY.
 11) HOUSINGS MAY HAVE EITHER AN IDENTIFIER RIB OR "1" SYMBOL ENGRAVE TO INDICATE CIRCUIT #1.
 12) THIS PART CONFORMS TO CLASS 'B' REQUIREMENTS OF COSMETIC SPECIFICATION PS-45499-002.

ADD PK SPEC NOTES	2009/11/18
EC NO: UCP2010-0075	2009/11/25
DR: WASSON/SEK	2009/11/25
CHK: BELL	2009/11/30
APP: FSK/TH	
REV	DESCRIPTION
M1	

QUALITY SYMBOLS	GENERAL TOLERANCES (UNLESS SPECIFIED)	
	mm	INCH
▽=0	4 PLACES ±	±
▽=0	3 PLACES ±	±.010
	2 PLACES ±	±.025 ±.014
	1 PLACE ±	±.035 ±---
	ANGULAR ±1/2°	
DRAFT WHERE APPLICABLE MUST REMAIN WITHIN DIMENSIONS		

DIMENSION STYLE	
IN/MM	
DRAWN BY	DATE
A. F. G.	1993/01/14
CHECKED BY	DATE
B. A. P.	1993/01/14
APPROVED BY	DATE
R. A. S.	1993/01/14

SCALE	DESIGN UNITS	THIRD ANGLE PROJECTION
4:1	METRIC	
TITLE		
MICRO-FIT (3.0) 2 THRU 24 CIRCUIT RECEPTACLE		
MOLEX INCORPORATED		
MATERIAL NO.	DOCUMENT NO.	SHEET NO.
SEE CHART	SDA-43025-****	1 OF 1
SIZE D THIS DRAWING CONTAINS INFORMATION THAT IS PROPRIETARY TO MOLEX INCORPORATED AND SHOULD NOT BE USED WITHOUT WRITTEN PERMISSION		