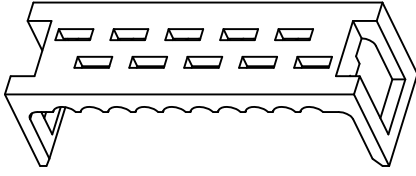
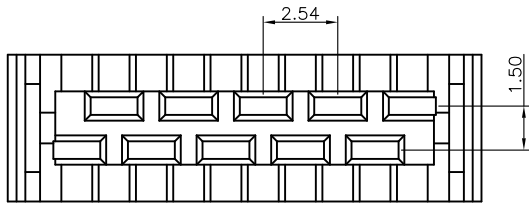
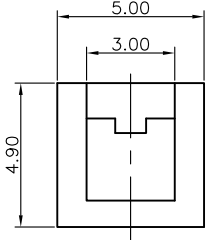
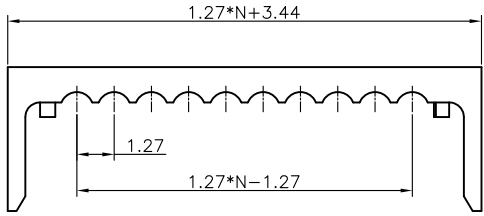


REV.	DESCRIPTION	DRAWN	CHECKED	APPROVED
A	NEW RELEASE	YCH 03/11/11'	~	



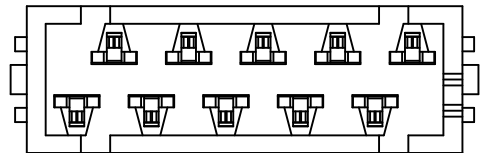
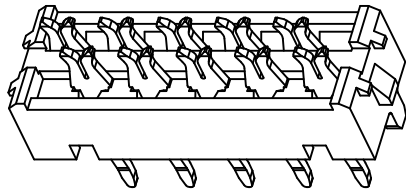
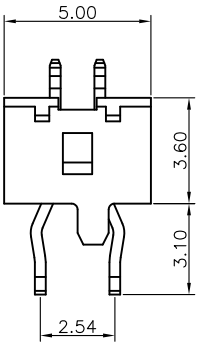
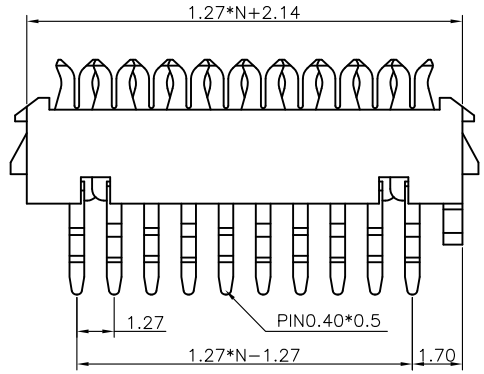
- NOTES:
- MATERIAL
 - INSULATOR:THERMOPLASTIC(UL 94V-0).
 - CONTACT: COPPER ALLOY.
 - SPECIFICATION
 - TEMPERATURE RANGE:-40°C~+105°C.
 - CONTACT RESISTANCE:30mΩ max.
 - INSULATION RESISTANCE:1000MΩ min.
 - DIELECTRIC WITHSTANDING VOLTAGE:AC 500V PER MINUTE.
 - PRODUCT NUMBER CODE:
DS1015-02- X X X

CONTACT PLATING
 2: NICKEL+GOLD FLASH
 6: FULL TIN
 8: FULL GOLD FLASH

HOUSING COLOR
 R:RED

No. OF CONTACTS
 04 06 08 10
 12 14 16 18
 20 24

COVER



HOUSING

GENERAL TOLERANCE		ANGLE TOLERANCE		PROJECTION		TITLE	MICRO MATCH	
X.	±0.60	X.	±5°	UNITS	mm	PADDEL BOARD CONNECTOR		
.X	±0.38	.X	±3°	SHEET SIZE	A4	SERIES	DS1015-02 SERIES	
.XX	±0.25	.XX	±2°					
DRAWING TYPE		CUSTOMER						
SCALE	1:1	SHEET	1 OF 1					
DRAWING NO.	C-DS1015-02-XXX							