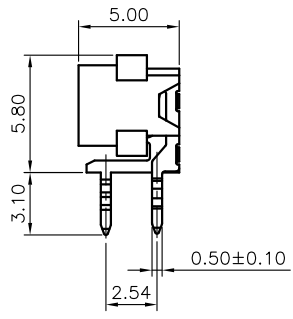
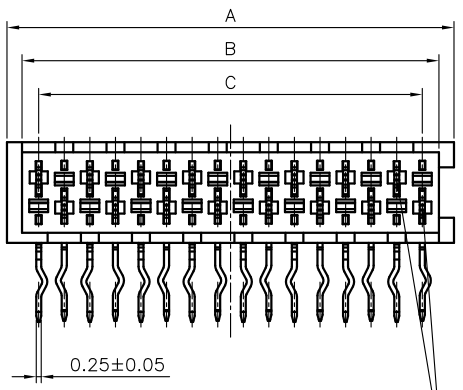


REV.	DESCRIPTION	DRAWN	CHECKED	APPROVED
A	NEW RELEASE	DGQ 06/14/11'		LJC 06/14/11'
B	PACKING TYPE CHANGE Δ	JLZ 01/30/15'		



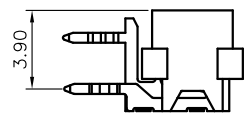
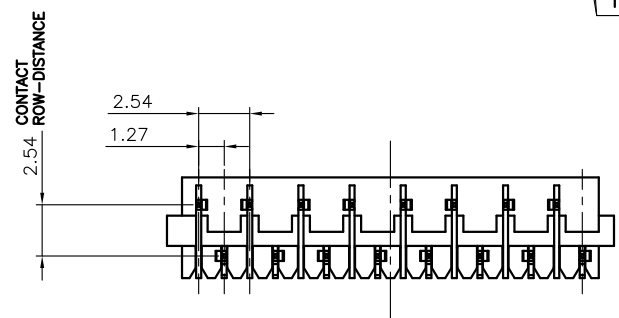
REFERENCE MATING INTERFACE PATTERN
1.27 STAGGERED PITCH x1.5 ROW DISTANCE.

NOTES:

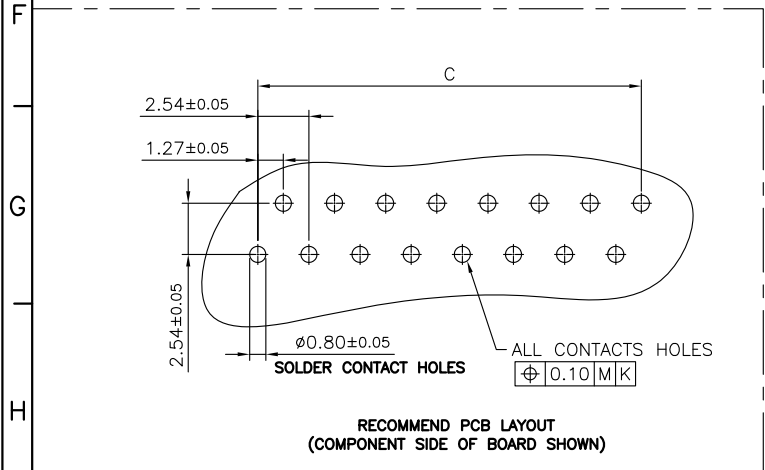
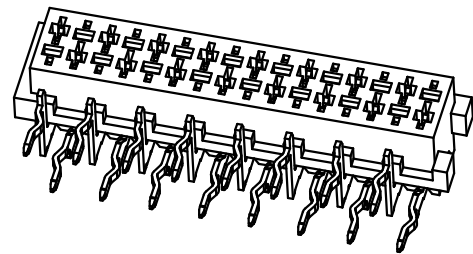
- MATERIAL
 - INSULATOR:THERMOPLASTIC(UL 94V-0).
 - CONTACT: 0.25t COPPER ALLOY.
- SPECIFICATION
 - TEMPERATURE RANGE:-40°C~+105°C.
 - CONTACT RESISTANCE:30mΩ max.
 - INSULATION RESISTANCE:1000MΩ min.
 - DIELECTRIC WITHSTANDING VOLTAGE:AC 500V PER MINUTE.

3. PRODUCT NUMBER CODE:
DS1015-05 - X X X X

- PACKING TYPE
B: TUBE Δ
- CONTACT PLATING
6: FULL MATT TIN
- HOUSING COLOR
R: RED
- No. OF CONTACTS
04 06 08 10 12 14
16 18 20 22 24



POSITIONS	DIM A	DIM B	DIM C
4	6.96	5.46	3.81
6	9.50	8.00	6.35
8	12.04	10.54	8.89
10	14.58	13.08	11.43
12	17.12	15.62	13.97
14	19.66	18.16	16.51
16	22.20	20.70	19.05
18	24.74	23.24	21.59
20	27.28	25.78	24.13
22	29.82	28.32	26.67
24	32.36	30.86	29.21



GENERAL TOLERANCE	ANGLE TOLERANCE	PROJECTION		TITLE	MICRO MATCH FEMALE RIGHT ANGLE THROUGH HOLE TYPE	
X. ±0.60	X. ±5°	UNITS	mm	SERIES	DS1015-05 SERIES	
.X ±0.38	.X ±3°	SHEET SIZE	A4			
.XX ±0.25	.XX ±2°					
DRAWING TYPE	CUSTOMER					
SCALE	1:1	SHEET	1 OF 1			
DRAWING NO.	C-DS1015-05-XXXX-B					