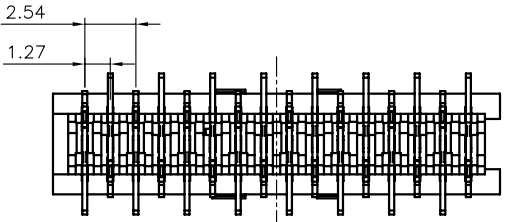
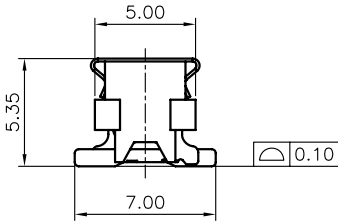
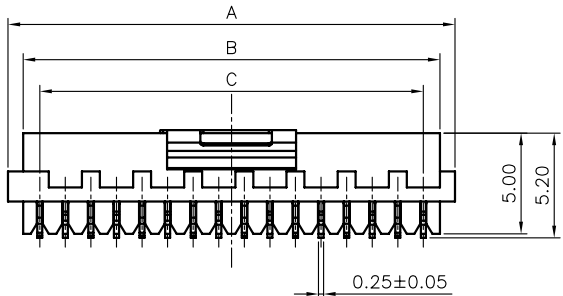
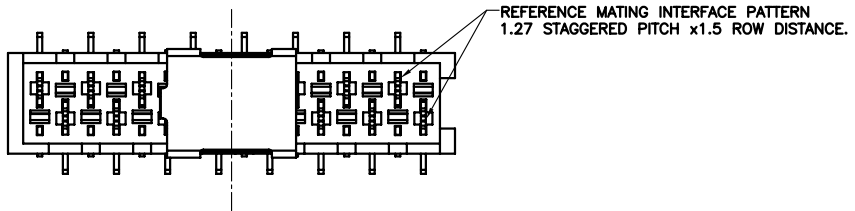


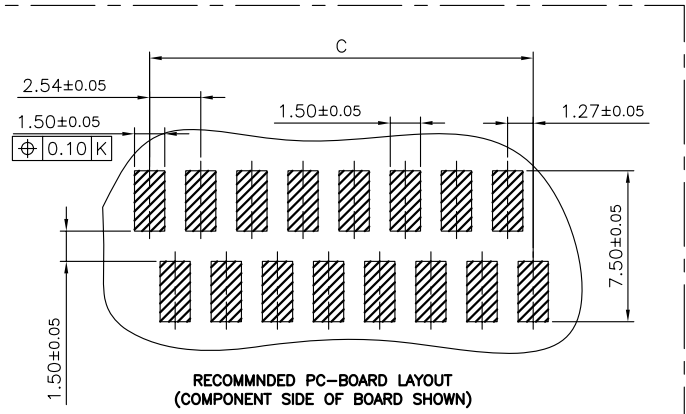
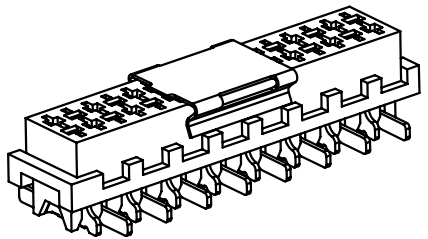
REV.	DESCRIPTION	DRAWN	CHECKED	APPROVED
A	NEW RELEASE	DGQ 06/14/11'		



POSITIONS	DIM A	DIM B	DIM C
4	6.96	5.46	3.81
6	9.50	8.00	6.35
8	12.04	10.54	8.89
10	14.58	13.08	11.43
12	17.12	15.62	13.97
14	19.66	18.16	16.51
16	22.20	20.70	19.05
18	24.74	23.24	21.59
20	27.28	25.78	24.13
22	29.82	28.32	26.67
24	32.36	30.86	29.21

- NOTES:
- MATERIAL
 - INSULATOR: THERMOPLASTIC (UL 94V-0).
 - CONTACT: 0.25t COPPER ALLOY.
 - PICKUP: 0.15t STAINLESS STEEL.
 - SPECIFICATION
 - TEMPERATURE RANGE: -40°C ~ +105°C.
 - CONTACT RESISTANCE: 30mΩ max.
 - INSULATION RESISTANCE: 1000MΩ min.
 - DIELECTRIC WITHSTANDING VOLTAGE: AC 500V PER MINUTE.
 - PRODUCT NUMBER CODE: DS1015-06 - X X X X X

X: PICKUP SUPPORT
 X: W/O MYLAR
 X: W MYLAR
 X: CONTACT PLATING
 6: FULL MATT TIN
 R: HOUSING COLOR
 R: RED
 No. OF CONTACTS
 04 06 08 10 12 14
 16 18 20 22 24



GENERAL TOLERANCE		ANGLE TOLERANCE		PROJECTION	⊕ - ▽	TITLE	
X.	±0.60	X.	±5°	UNITS	mm	MICRO MATCH FEMALE VERTICAL SMT TYPE	
.X	±0.38	.X	±3°	SHEET SIZE	A4	SERIES	DS1015-06 SERIES
.XX	±0.25	.XX	±2°				
DRAWING TYPE		CUSTOMER					
SCALE		1:1	SHEET	1 OF 1			
DRAWING NO.		C-DS1015-06-XXXXX-A					